

Updating the Pocket FSU Application

Tip: If you have purchased your PDA from CASWA, then this step will be complete.

Ensure that your PocketPC is connected to your computer and that the minimum required software versions are installed (see **Error! Reference source not found.**).

1.1 Procedure for configuring a PDA

Plug the PDA into a PC.

Go to <http://www.accesspack.com.au> and click on the “Updates and Support” link.

Click on the PDA_Setup_xxx item



Your Browser will ask you what you want to do.

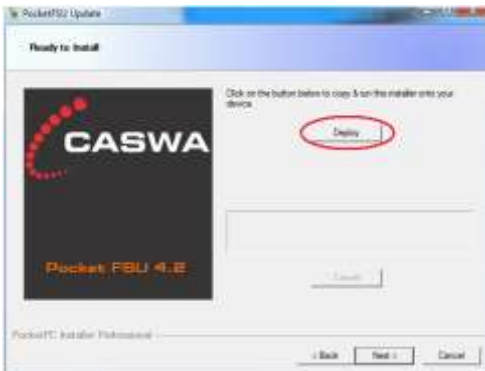


Choose <Run>

After the download completes, you should see the following screen appear



Click <Next >



Click Deploy to begin the install

Depending on what you have previously installed on the PDA, you'll see a series of prompts (on the PDA screen).

When you see this one:

Install the software to the device, not the SD card.



If you see an alert to the effect that this software is from an unknown publisher, tap YES.

When you see this one:

Tap OK to finish the install.

